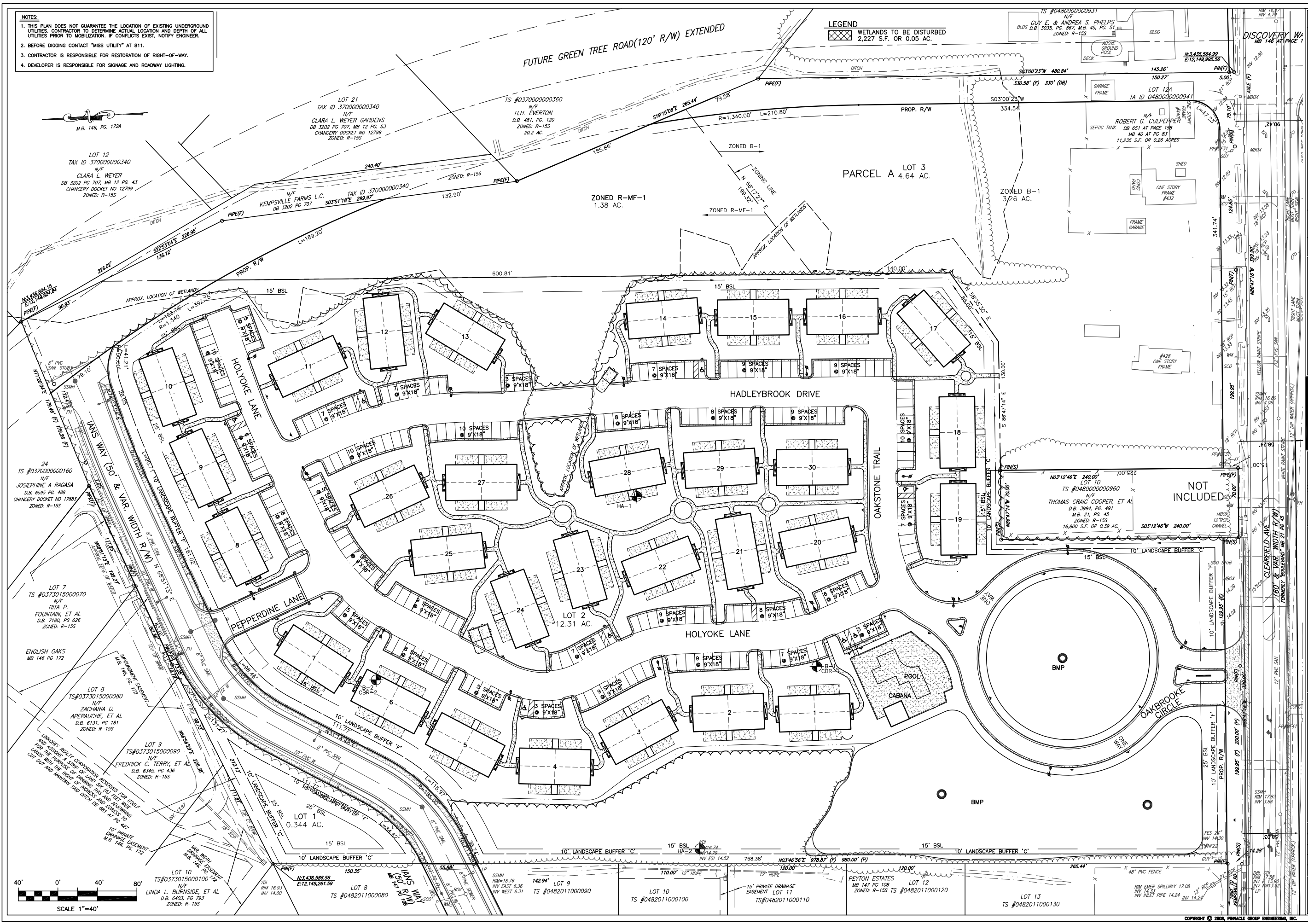


NOTES:

1. THIS PLAN DOES NOT GUARANTEE THE LOCATION OF EXISTING UNDERGROUND UTILITIES. CONTRACTOR TO DETERMINE ACTUAL LOCATION AND DEPTH OF ALL UTILITIES PRIOR TO MOBILIZATION. IF CONFLICTS EXIST, NOTIFY ENGINEER.
2. BEFORE DIGGING CONTACT "MISS UTILITY" AT 811.
3. CONTRACTOR IS RESPONSIBLE FOR RESTORATION OF RIGHT-OF-WAY.
4. DEVELOPER IS RESPONSIBLE FOR SIGNAGE AND ROADWAY LIGHTING.

LEGEND

WETLANDS TO BE DISTURBED
2,227 S.F. OR 0.05 AC.



<p>Pinnacle Group Engineering, Inc. 6037 Providence Road, Suite 4 Virginia Beach, Va. 23464 Tel: (757) 424-7724 & Fax: (757) 424-8606 E-mail: rflowe@pinnacleeng.com</p>	
<p>group, inc.</p>	
<p>OAKBROOKE CROSSING SITE DEVELOPMENT PLAN</p>	
<p>PROJECT NO. 2007-008 SCALE 1" = 40' DATE 3.10.08 DRAWN BY PG CHECKED BY ENF</p>	
<p>LAYOUT PLAN</p>	
<p>SHEET TITLE</p>	
<p>PROJECT NO. 2007-008 SCALE 1" = 40' DATE 3.10.08 DRAWN BY PG CHECKED BY ENF</p>	
<p>C3 3 of 13 SHEETS</p>	